



**PPIC  
STATEWIDE  
SURVEY**

**JULY 2006**

**Special Survey on the Environment**  
*in collaboration with*

**The William and Flora Hewlett  
Foundation**

••••

**Mark Baldassare**  
Research Director & Survey Director

**Public  
Policy  
Institute of  
California**

The Public Policy Institute of California (PPIC) is a private operating foundation established in 1994 with an endowment from William R. Hewlett. The Institute is dedicated to improving public policy in California through independent, objective, nonpartisan research.

PPIC's research agenda focuses on three program areas: population, economy, and governance and public finance. Studies within these programs are examining the underlying forces shaping California's future, cutting across a wide range of public policy concerns, including education, health care, immigration, income distribution, welfare, urban growth, and state and local finance.

PPIC was created because three concerned citizens – William R. Hewlett, Roger W. Heyns, and Arjay Miller – recognized the need for linking objective research to the realities of California public policy. Their goal was to help the state's leaders better understand the intricacies and implications of contemporary issues and make informed public policy decisions when confronted with challenges in the future. PPIC does not take or support positions on any ballot measure or on any local, state, or federal legislation, nor does it endorse, support, or oppose any political parties or candidates for public office.

David W. Lyon is founding President and Chief Executive Officer of PPIC. Thomas C. Sutton is Chair of the Board of Directors.

**Public Policy Institute of California**

500 Washington Street, Suite 800 • San Francisco, California 94111

Telephone: (415) 291-4400 • Fax: (415) 291-4401

info@ppic.org • www.ppic.org

---

## Preface

---

The PPIC Statewide Survey series provides policymakers, the media, and the general public with objective, advocacy-free information on the perceptions, opinions, and public policy preferences of California residents. Inaugurated in April 1998, the survey series has generated a database that includes the responses of more than 144,000 Californians.

This edition of the PPIC Statewide Survey—a survey on the environment—is the fifth in a three-year PPIC survey series made possible with funding from the William and Flora Hewlett Foundation. The intent of this particular survey series is to inform state, local, and federal policymakers, encourage discussion, and raise public awareness about a variety of environment, education, and population issues facing the state.

The current survey examines environmental attitudes, policy preferences, and support for ballot choices. We focus attention on the related issues of air quality, global warming, and energy because these are current topics in public policy and political debates at both the state and federal government levels. California public opinion is relevant for several reasons: The state has several regions with high air pollution levels, it has taken the lead nationally in policy efforts on alternative energy and global warming, residents have recently been experiencing increases in gasoline prices, and voters will make decisions at the ballot box in November.

This edition of our survey series presents the responses of 2,501 adult residents throughout the state. With a large sample size and multilingual interviewing, we examine in detail the trends in public perceptions of air quality and resident health at the regional and statewide levels, look at current attitudes towards global warming and energy policy, and analyze the public's environmental policy preferences and ballot choices in the November 2006 election. Some of the questions are repeated from PPIC Statewide Surveys on the environment conducted in June 2000, June 2002, July 2003, July 2004, and July 2005. To offer some perspective, other questions are repeated from recent national surveys. More specifically, we examine the following issues:

- Air quality and health issues, including identification of the state's most important environmental issue, ratings of air pollution and perceived trends in air quality in the region where the respondent lives, perceived threat of air pollution to personal health, beliefs about the causes of air pollution and responsibility for air quality standards, and actions people are willing to take to improve air quality.
- Global warming and energy, including attitudes toward the immediacy of global warming and its effects on California's future, support for state policies to address the issues of global warming and greenhouse gas emissions, opinions about the U.S. energy supply and allowing more oil drilling, funding the development of alternative energy, and the effects of gasoline prices.
- Environment and politics, including preferences for federal and state involvement in environmental protection, ratings of the governor and president overall and on environment and energy issues, the importance of environmental issues such as air quality, global warming, and energy policy in the governor's and U.S. Senate elections, voters' support for the alternative energy initiative (Proposition 87), and the importance of alternative energy development.
- Variations in environmental perceptions, attitudes, policy preferences, and ballot choices across the five major regions of the state (Central Valley, San Francisco Bay Area, Los Angeles County, Orange/San Diego Counties, and Inland Empire), among Asians, blacks, Latinos, and non-Hispanic whites, and across age, education, income, and political groups.

Copies of this report may be ordered by e-mail ([order@ppic.org](mailto:order@ppic.org)) or phone (415-291-4400). Copies of this and earlier reports are posted on the publications page of the PPIC web site ([www.ppic.org](http://www.ppic.org)). For questions about the survey, please contact [survey@ppic.org](mailto:survey@ppic.org).

## Regional Groupings Used in This Report



---

## Contents

---

|                                     |           |
|-------------------------------------|-----------|
| <b>Preface</b>                      | <b>i</b>  |
| <b>Press Release</b>                | <b>v</b>  |
| <b>Air Quality and Health</b>       | <b>1</b>  |
| <b>Global Warming and Energy</b>    | <b>7</b>  |
| <b>Environment and Politics</b>     | <b>13</b> |
| <b>Survey Methodology</b>           | <b>19</b> |
| <b>Survey Questions and Results</b> | <b>21</b> |
| <b>Survey Advisory Committee</b>    | <b>27</b> |



---

## Press Release

---

Para ver este comunicado de prensa en español, por favor visite nuestra página de internet:  
<http://www.ppic.org/main/pressreleaseindex.asp>

### ***SPECIAL SURVEY ON THE ENVIRONMENT***

#### **CALIFORNIANS BELIEVE GLOBAL WARMING CLOCK IS TICKING**

#### **With Little Faith in Feds, Residents Favor State Making Own Policies to Combat Effects; Escalating Pain at the Pump; Environment an Important Issue in the November Election**

SAN FRANCISCO, California, July 26, 2006 — Even before the record-setting heat wave of the last two weeks, Californians were becoming so alarmed about global warming that a vast majority want the state to act on its own to fight the trend, according to a survey released today by the Public Policy Institute of California (PPIC) with funding from The William and Flora Hewlett Foundation.

“Californians now rank global warming as more important than at any time since we first started asking about it in June of 2000,” says PPIC survey director Mark Baldassare. “They are so concerned that two-thirds actually want the state to address this issue – completely independent of the federal government.” Support for such unilateral action is up by 11 points (65% vs. 54%) since last year at this time and cuts across party lines: Democrats (73%), independents (70%), and Republicans (62%) all strongly support state action. This sense of urgency is no doubt fueled by lack of confidence in Washington’s response: Over half (54%) of Californians believe the federal government is on the wrong track when it comes to global warming; only 29 percent believe the feds are on the right track.

Overall, the survey – conducted just before the recent wave of record-setting temperatures – finds that energy and global warming have jumped to number two and three, respectively, on residents’ list of the most important environmental issues facing the state. Nearly half (49%) say global warming is a “very serious” threat to the state’s economy and quality of life; another 30 percent believe it is a “somewhat serious” threat. A sense of immediacy is evidently driving these fears: 63 percent of residents believe the effects of global warming are already under way – a six-point increase from a year ago. Moreover, the vast majority of Californians (79%) believe it is necessary to take steps right away to counter the effects of global warming – up from 73 percent in July 2003.

“The immediacy of the issue, the feeling that it’s happening as we speak, has become more powerful,” says Baldassare. “This sense of urgency is reflected in the public’s attitudes and in some of their policy preferences.” Indeed, California’s electorate strongly favors a proposal by state lawmakers that would reduce greenhouse gas emissions to 1990 levels by the year 2020: Two-thirds (66%) of likely voters support the proposed legislation and only 19 percent oppose it. Overwhelming support also exists among all likely voters (80%), Democrats (88%), independents (79%), and Republicans (71%) for the state law requiring automakers to further reduce greenhouse gas emissions from new cars.

#### **Ouch! Gas Prices Really Starting To Sting; Fuel Efficiency, Alternative Energy Embraced**

A large majority of Californians (67%) now say that gasoline prices are causing them financial hardship – seven points higher than adults nationwide (60% according to an ABC News poll). Moreover, prices are hurting some more than others: Latinos (83%) and those with annual incomes under \$40,000 (80%) are considerably more likely than other Californians to say they are suffering financial adversity. As a result of soaring prices, a majority (54%) of residents say they have cut back significantly on their driving – an 11-point jump from a year ago.

The pain is evidently strong enough that people are willing to make big changes. About seven in ten (69%) Californians now say they are considering getting a more fuel-efficient car, including SUV owners (71%). Even higher numbers of residents (74%) and likely voters (82%) also say they are willing to put their money where their mouth is by requiring automakers to improve vehicle fuel efficiency – even if it increases the cost of buying a new car.

In addition, residents of all political persuasions are ready to jump on the bandwagon for alternative energy sources: 81 percent of all adults support the government spending more money to develop alternative energy sources for automobiles, including 87 percent of Democrats, 85 percent of independents, and 82 percent of Republicans. Similarly high, and bipartisan, support is behind increased government spending on renewable sources of energy such as solar, geothermal, and wind power (all adults, 83%; Democrats, 89%; independents, 86%; Republicans, 82%). In contrast, half (51%) of residents oppose drilling off the California coast, with Democrats opposed and Republicans in favor.

### **Not Everybody's Problem... Air Pollution an Issue of Race, Region**

Although air pollution remains the number one environmental concern among Californians, the level of concern has trended downward in the past six years: In June 2000, one-third (33%) of residents called air pollution the state's most important environmental issue, compared to about one-quarter (24%) today. But statewide perceptions mask a wide gulf between different racial and ethnic groups in the perceived seriousness of air pollution as a regional problem. Latinos (53%) and blacks (49%) are far more likely than whites (36%) or Asians (34%) to say air pollution is a big problem in their region. Latinos (63%) and blacks (54%) are also more likely than whites (44%) or Asians (42%) to say that their region's air quality has grown worse in the past 10 years.

Even more alarming are the different perceptions of health effects related to air pollution. Blacks (38%) and Latinos (31%) are much more likely than whites (18%) or Asians (13%) to say air pollution is a very serious threat to themselves and their families. Moreover, when linking pollution to environmental equity, there are even greater differences across racial and ethnic groups: 70 percent of Latinos and 63 percent of blacks say air pollution is a more serious threat in lower-income areas than other areas, compared to 42 percent of Asians and only 35 percent of whites. "There is a serious disconnect, not only about the gravity of the issue but about who is being affected," says Baldassare. "Latinos are twice as likely as whites to believe that air quality is worse in low-income areas."

Regional differences compound the complexity of the issue. Residents of Los Angeles (54%) are almost twice as likely as those in Orange/San Diego Counties (29%) to say air pollution is a big problem. Further north, Central Valley residents (51%) are far more likely than those in the San Francisco Bay Area (33%) to consider air pollution a big problem. Residents in inland areas of the state (Inland Empire, 62%; Central Valley, 59%) are more likely than coastal residents to say their air quality is worse than it was 10 years ago (Los Angeles, 48%; Orange/San Diego Counties, 46%; San Francisco Bay Area, 45%).

So who – or what – do Californians blame for pollution? Personal vehicle emissions (26%) top the list, followed by commercial vehicle emissions (18%), growth and development (16%), and industry and agriculture (12%). Although there is some statewide agreement on the causes of air pollution, regional difference rears its head again: Only 19 percent of Central Valley residents cite personal vehicles as the biggest cause, compared to 34 percent in the San Francisco Bay Area. Residents of the Inland Empire are as likely to cite pollution from outside the area as they are personal vehicles (21% each). There is, however, greater agreement on at least one means of combating pollution. When asked if they would accept tougher air pollution standards on new vehicles even if it made them more expensive, two in three (66%) residents across the state say they would support such standards – as would SUV owners (67%).

### **Come November... the Environment Matters**

About eight in ten (85%) likely voters say that candidates' positions on environmental issues such as air pollution, global warming, and energy policy will be at least somewhat important in determining how they will



vote in this November's gubernatorial election – and 44 percent consider it very important. A majority of Latino likely voters (54%) rate the candidates' stand as very important for their decision.

This issue could dog Governor Arnold Schwarzenegger, even though he has a lead over opposing candidate Phil Angelides in the poll. Currently, 43 percent of all likely voters say they would vote for Schwarzenegger, 30 percent would vote for Angelides, 8 percent would vote for others, and 19 percent are undecided.

Schwarzenegger's approval ratings for handling environmental issues are mixed (approve 44%, disapprove 36%, don't know 20%). Further, despite the governor's significant push on alternative energy issues, approval for his energy policy is split (approve 40%, disapprove 38%); and nearly one-quarter (22%) of voters say they don't know. The governor's overall approval ratings are also mixed, with 49 percent approving and 43 percent disapproving of the way he is running the state.

### More Key Findings

- **Californians to All Government: Do More on Environment!** (page 13)

Although the federal government fares poorly – with 61 percent of Californians saying it is not doing enough to protect the environment – nearly half (46%) say the same about state government.

- **Little Approval for Bush's Environmental, Energy Policies** (page 14)

Large majorities of likely voters disapprove of the way President Bush is handling environmental (63%) and energy (65%) issues, while relatively few approve (28% and 27%, respectively).

- **Senate Race: Feinstein Has Double-Digit Lead** (page 17)

Senator Dianne Feinstein has a solid lead over her opponent Richard Mountjoy (42% to 21%).

- **Prop 87: Alternative Energy a Hit** (page 18)

Sixty-one percent of likely voters support this November's "Alternative Energy Initiative."

### About the Survey

This edition of the PPIC Statewide Survey is the fifth in a three-year survey series on the environment made possible with funding from The William and Flora Hewlett Foundation. This survey is intended to raise public awareness, inform decisionmakers, and stimulate public discussions about issues related to the environment. Findings of this survey are based on a telephone survey of 2,501 California adult residents interviewed between July 5 and July 18, 2006. Interviews were conducted in English, Spanish, Korean, Vietnamese, or Chinese. The sampling error for the total sample is +/- 2%. The sampling error for subgroups is larger. For more information on methodology, see page 19.

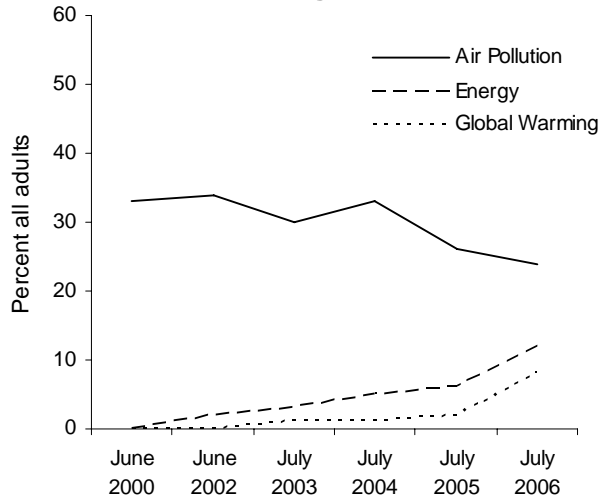
Mark Baldassare is research director at PPIC, where he holds the Arjay and Frances Fearing Miller Chair in Public Policy. He is founder of the PPIC Statewide Survey, which he has directed since 1998.

PPIC is a private, nonprofit organization dedicated to improving public policy through objective, nonpartisan research on the economic, social, and political issues that affect Californians. The institute was established in 1994 with an endowment from William R. Hewlett. PPIC does not take or support positions on any ballot measure or on any local, state, or federal legislation, nor does it endorse, support, or oppose any political parties or candidates for public office.

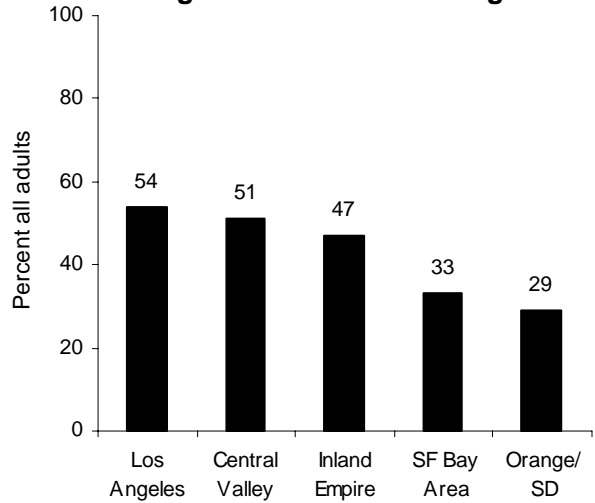
This report will appear on PPIC's website ([www.ppic.org](http://www.ppic.org)) after 10:00 p.m. on July 26.

###

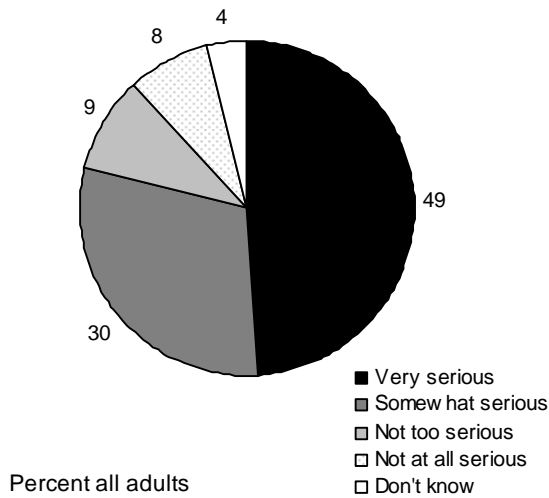
### Most Important Environmental Issue Facing California



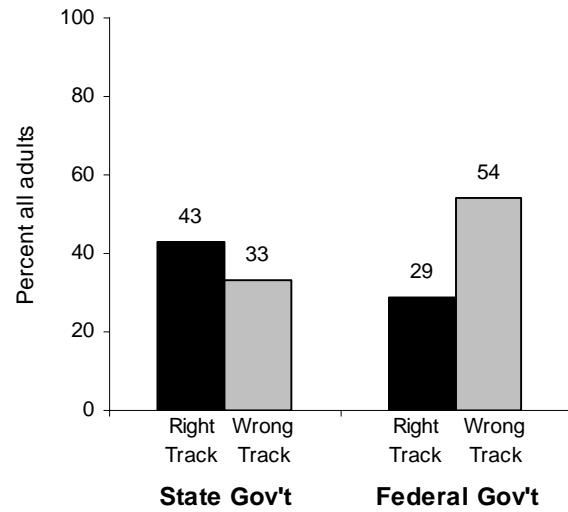
### Percent Who Believe Air Pollution Is a "Big Problem" in Their Region



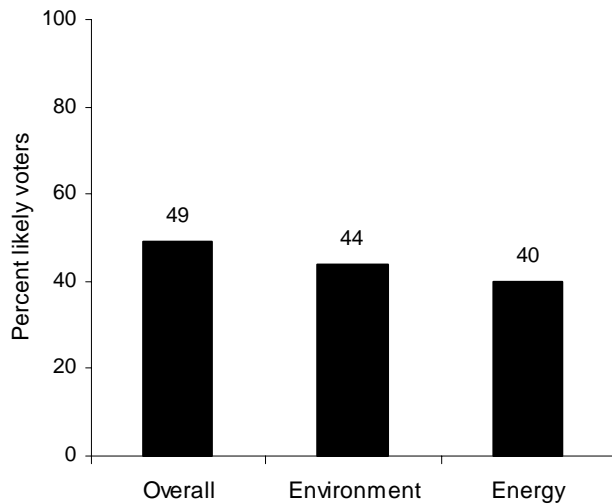
### How Serious of a Threat Is Global Warming to the Economy and Quality of Life for California's Future?



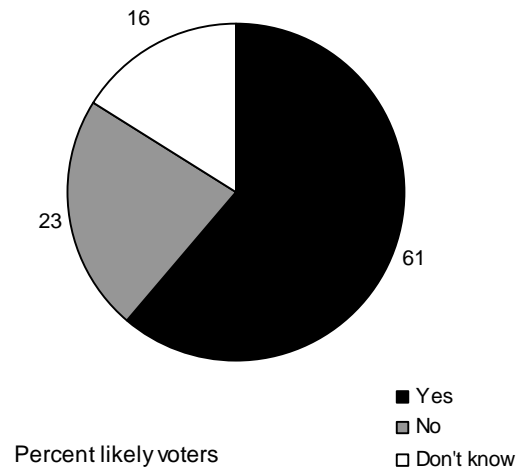
### Right Track or Wrong Track in Addressing Global Warming



### Governor Schwarzenegger's Approval Ratings



### Proposition 87: Alternative Energy Initiative



## Air Quality and Health

### Most Important State Environmental Issue

Californians continue to say that air pollution is the state's most important environmental issue, but energy and global warming are receiving more public attention today than in the past. One in four Californians thinks air pollution is the most important environmental issue in California today, making it the top issue for residents since this question was first asked in June 2000. The proportion of Californians naming energy or global warming as the top environmental issue has been increasing. Today, 12 percent name energy as the most important issue, compared to only 6 percent in July 2005, 5 percent in July 2004, and 3 percent in July 2003. The most sizable increase has occurred in those naming global warming as their top environmental concern (1%, July 2003 and July 2004; 2%, July 2005; 8%, today). In contrast to the past, today fewer residents mention water pollution (4%) or pollution in general (5%) than global warming or energy as the most important environmental concern.

**“What do you think is the most important environmental issue facing California today?”**

| <i>Top five issues mentioned</i> | June 00 | June 02 | July 03 | July 04 | July 05 | July 06 |
|----------------------------------|---------|---------|---------|---------|---------|---------|
| <b>Air pollution</b>             | 33%     | 34%     | 30%     | 33%     | 26%     | 24%     |
| <b>Energy</b>                    | 0       | 2       | 3       | 5       | 6       | 12      |
| <b>Global warming</b>            | 0       | 0       | 1       | 1       | 2       | 8       |
| <b>Pollution in general</b>      | 9       | 5       | 6       | 8       | 6       | 5       |
| <b>Water pollution</b>           | 6       | 12      | 10      | 7       | 6       | 4       |

Across California's regions, air pollution is considered the most important environmental issue; however, residents of the Inland Empire (31%), Los Angeles (28%), and the Central Valley (26%) are more likely than those in the San Francisco Bay Area (20%) and Orange/San Diego Counties (19%) to hold this view. Air pollution is also the top environmental issue across racial/ethnic groups; Latinos (30%) are more likely than blacks (23%), whites (22%), or Asians (17%) to name it as the top issue. Latinos (5%) are less likely than others to name global warming as the top issue. San Francisco Bay Area residents (12%) are more likely than residents in other regions to name it the top issue. Although Democrats, Republicans, and independents agree that air pollution is the most important issue, Republicans are the most likely to name energy (18%) and the least likely to name global warming (2%) as the top environmental concern.

**“What do you think is the most important environmental issue facing California today?”**

| <i>Top five issues mentioned</i> | All Adults | <u>Region</u>  |             |             |                  |               |
|----------------------------------|------------|----------------|-------------|-------------|------------------|---------------|
|                                  |            | Central Valley | SF Bay Area | Los Angeles | Orange/San Diego | Inland Empire |
| <b>Air pollution</b>             | 24%        | 26%            | 20%         | 28%         | 19%              | 31%           |
| <b>Energy</b>                    | 12         | 9              | 17          | 8           | 11               | 15            |
| <b>Global warming</b>            | 8          | 7              | 12          | 9           | 6                | 3             |
| <b>Pollution in general</b>      | 5          | 5              | 6           | 7           | 6                | 5             |
| <b>Water pollution</b>           | 4          | 4              | 4           | 4           | 8                | 1             |

**Regional Air Pollution**

When asked to rank the severity of several problems in their region, three in four Californians (75%) name air pollution as at least somewhat of a problem, and 41 percent say it is a big problem. Of the four issues the respondents were asked to rank, a higher percentage say that traffic congestion (64%) is a big problem than population growth and development (42%), air pollution (41%), or pollution of drinking water (22%).

The percentage of adults statewide who say that air pollution in their part of California is a big problem has increased by 13 points since June 2000 (28% to 41%) and 10 points since July 2003 (31% to 41%). Across California’s regions today, residents in Los Angeles (54%), the Central Valley (51%), and the Inland Empire (47%) are much more likely to say that air pollution is a big problem than those in the San Francisco Bay Area (33%) and Orange/San Diego Counties (29%). Over time, there have been particularly dramatic increases in citing air pollution as a problem in the Central Valley (28%, 2000; 51%, today), the Inland Empire (28%, 2000; 47%, today), and Los Angeles (40%, 2000; 54%, today). Citing air pollution as a big problem has increased over time in all five regions.

| <i>Percent saying air pollution is “a big problem”</i> | June 00 | May 01 | June 02 | July 03 | July 04 | July 05 | July 06 |
|--|---------|--------|---------|---------|---------|---------|---------|
| <b>All Adults</b>                                      | 28%     | 30%    | 34%     | 31%     | 35%     | 38%     | 41%     |
| <b>Central Valley</b>                                  | 28      | 33     | 39      | 42      | 47      | 45      | 51      |
| <b>San Francisco Bay Area</b>                          | 26      | 22     | 27      | 21      | 24      | 28      | 33      |
| <b>Los Angeles</b>                                     | 40      | 46     | 47      | 43      | 47      | 50      | 54      |
| <b>Orange/San Diego</b>                                | 20      | 21     | 26      | 22      | 26      | 30      | 29      |
| <b>Inland Empire</b>                                   | 28      | 30     | 35      | 38      | 38      | 48      | 47      |

Public perceptions of air pollution as a regional problem are also significantly different across racial/ethnic groups. Latinos (53%) and blacks (49%) are much more likely than whites (36%) and Asians (34%) to think that air pollution is a big problem in their region. Women (43%) are somewhat more likely than men (39%) to name it as a big problem. Partisan differences also exist, with half of Democrats (48%) thinking air pollution is a big problem in their region compared to only three in 10 Republicans (30%) and four in 10 independents (40%). Ratings of air pollution as a big problem tend to decrease with age, education, homeownership, and income.

**“How big of a problem is air pollution in your region?”**

|                              | All Adults | <u>Race/Ethnicity</u> |        |         |        |
|------------------------------|------------|-----------------------|--------|---------|--------|
|                              |            | Asians                | Blacks | Latinos | Whites |
| <b>Big problem</b>           | 41%        | 34%                   | 49%    | 53%     | 36%    |
| <b>Somewhat of a problem</b> | 34         | 34                    | 28     | 30      | 37     |
| <b>Not a problem</b>         | 24         | 31                    | 22     | 16      | 27     |
| <b>Don't know</b>            | 1          | 1                     | 1      | 1       | 0      |

## Regional Air Quality

Just as Californians are increasingly citing air pollution as a problem, many residents believe that air quality is getting worse. Half of California’s residents say regional air quality is worse (50%) compared to 10 years ago, one in five say it is better (21%), and 13 percent volunteered that it is the same. Sixteen percent are unsure. The percentage of adults now saying that regional air quality is worse is similar to last July (47%), but has increased significantly since July 2003 (38%).

Across the state’s regions, the belief that regional air quality is worse today than it was 10 years ago is greatest in the Inland Empire (62%) and the Central Valley (59%), while residents of the San Francisco Bay Area (45%), Orange/San Diego Counties (46%), and Los Angeles (48%) areas are less pessimistic. In fact, Los Angeles and Orange/San Diego residents are more likely than others to say their air has improved.

Latinos (63%) and blacks (54%) are more likely than whites (44%) and Asians (42%) to perceive that air quality in their region is worse today than it was 10 years ago. Fewer than one in four adults across racial/ethnic groups think there has been an improvement in air quality in the past decade. Women (53%) are more likely than men (46%) to say that air quality is worse today. Democrats (56%) are more likely than Republicans and independents (44% each) to say it is worse. The belief that the air quality is worse decreases with age, education, homeownership, and income.

Among Californians who say that air pollution is a big problem in their region, seven in 10 believe that it has gotten worse (68%), and one in five say it is either better (16%) or the same (5%).

**“Is the air quality in your region better or worse than it was 10 years ago?”**

|                       |                         | Better | Worse | Same<br>(volunteered) | Don't<br>know |
|-----------------------|-------------------------|--------|-------|-----------------------|---------------|
| <b>All Adults</b>     |                         | 21%    | 50%   | 13%                   | 16%           |
| <b>Region</b>         | <b>Central Valley</b>   | 13     | 59    | 10                    | 18            |
|                       | <b>SF Bay Area</b>      | 19     | 45    | 18                    | 18            |
|                       | <b>Los Angeles</b>      | 28     | 48    | 8                     | 16            |
|                       | <b>Orange/San Diego</b> | 25     | 46    | 13                    | 16            |
|                       | <b>Inland Empire</b>    | 17     | 62    | 6                     | 15            |
| <b>Race/Ethnicity</b> | <b>Asians</b>           | 14     | 42    | 22                    | 22            |
|                       | <b>Blacks</b>           | 23     | 54    | 1                     | 22            |
|                       | <b>Latinos</b>          | 18     | 63    | 8                     | 11            |
|                       | <b>Whites</b>           | 23     | 44    | 16                    | 17            |

In a separate question rating overall satisfaction with air quality in their region, only one in five Californians describe themselves as very satisfied (18%) with the air quality in their region today; 44 percent are only somewhat satisfied, and about four in 10 adults are either somewhat dissatisfied (24%) or very dissatisfied (13%). Residents in the San Francisco Bay Area and Orange/San Diego Counties (22% each) are more likely than others to be very satisfied with air quality in their region. About half of the residents in the Central Valley (47%), Los Angeles (47%), and the Inland Empire (46%) are at least somewhat dissatisfied with air quality. Blacks (49%) are much more likely to be dissatisfied than whites (37%), Latinos (35%), or Asians (31%). Dissatisfaction is higher among women than men, is similar across age groups, and increases with education and income.

**Air Pollution and Health**

Six in 10 Californians (60%) believe that air pollution in their region is a very serious (23%) or somewhat serious (37%) health threat to themselves and their immediate families. This level of concern is similar to that of July 2003 (58%), July 2004 (59%), and July 2005 (57%).

Majorities of residents in all regions say that local air pollution is at least somewhat of a health threat. However, the proportion of adults calling air pollution a very serious health threat is greater in Los Angeles (28%), the Central Valley (26%), and the Inland Empire (25%) than in Orange/San Diego Counties (21%) and the San Francisco Bay Area (16%).

There are significant differences across racial/ethnic groups in the perception of air pollution as a health threat. Blacks (38%) and Latinos (31%) are much more likely than whites (18%) or Asians (13%) to see it as a very serious threat. Women (26%) are more likely than men (20%) to call it a very serious threat. The percentage who see air pollution as a very serious health threat tends to decline with age, education, homeownership, and income.

**“How serious of a health threat is air pollution in your region to you and your immediate family?”**

|   | All Adults | Race/Ethnicity |        |         |        |
|---|------------|----------------|--------|---------|--------|
|   |            | Asians         | Blacks | Latinos | Whites |
| <b>Very serious</b>                     | 23%        | 13%            | 38%    | 31%     | 18%    |
| <b>Somewhat serious</b>                 | 37         | 39             | 34     | 44      | 35     |
| <b>Not too serious</b>                  | 36         | 38             | 27     | 23      | 43     |
| <b>Not at all serious (volunteered)</b> | 3          | 5              | 1      | 1       | 3      |
| <b>Don't know</b>                       | 1          | 5              | 0      | 1       | 1      |

Californians are divided on the issue of whether or not air pollution is more of a health threat in lower income areas (47% yes, 45% no). However, there are stunning differences across racial/ethnic groups: Seventy percent of Latinos and 63 percent of blacks say that it is a more serious health threat in lower-income areas, compared with 35 percent of whites. Asians are more divided (42% yes, 35% no). This belief declines with age, education, homeownership, and income.

**“Do you think that air pollution is a more serious health threat in lower-income areas than other areas in your region?”**

|                   | All Adults | Race/Ethnicity |        |         |        |
|-------------------|------------|----------------|--------|---------|--------|
|                   |            | Asians         | Blacks | Latinos | Whites |
| <b>Yes</b>        | 47%        | 42%            | 63%    | 70%     | 35%    |
| <b>No</b>         | 45         | 35             | 30     | 28      | 58     |
| <b>Don't know</b> | 8          | 23             | 7      | 2       | 7      |

Today, 41 percent of Californians say that they or a family member suffers from asthma or other respiratory problems, which is slightly higher than in July 2003 (37%). The proportion reporting respiratory problems is higher in the Central Valley (52%) and the Inland Empire (50%) than elsewhere, is higher for blacks (58%) and Latinos (46%) than whites (39%) and Asians (25%), and declines with income. Among households with children, 46 percent report respiratory problems (8% respondent, 31% family member, 7% both respondent and family), compared to 37 percent of households without children (12% respondent, 19% family member, 6% both respondent and family).

## Blame and Responsibility

The perception that vehicle emissions are the primary cause of regional air pollution is similar today (44%) to findings in July 2003 (47%) and July 2005 (42%). To further understand the role of vehicle emissions, this year we asked about both personal vehicles (26%) and commercial vehicles (18%), finding that residents are somewhat divided on which contributes more to their region's air pollution. Population growth and development (16%) are also mentioned as major causes of air pollution, followed by industry and agriculture (12%), pollution from outside the area (11%), and weather and geography (5%).

Residents in the San Francisco Bay Area (34%), Orange/San Diego Counties (30%), and Los Angeles (28%) are more likely than others to point to personal vehicle emissions as the primary cause of air pollution. Other Southern California residents (Inland Empire, 21%; Orange/San Diego, 19%) are more likely than others to name commercial vehicles. Latinos (16%) are less likely than others to cite personal vehicles (39% Asians, 29% whites, 28% blacks). Naming personal vehicles as the major cause of air pollution increases sharply with income and education.

**“Which of the following do you think contributes the most to air pollution in your region?”**

|                                   | All Adults | Region         |             |             |                  |               |
|-----------------------------------|------------|----------------|-------------|-------------|------------------|---------------|
|                                   |            | Central Valley | SF Bay Area | Los Angeles | Orange/San Diego | Inland Empire |
| Personal vehicle emissions        | 26%        | 19%            | 34%         | 28%         | 30%              | 21%           |
| Commercial vehicle emissions      | 18         | 14             | 17          | 21          | 19               | 21            |
| Population growth and development | 16         | 14             | 15          | 15          | 19               | 16            |
| Industry and agriculture          | 12         | 16             | 13          | 12          | 8                | 8             |
| Pollution from outside the area   | 11         | 18             | 4           | 6           | 11               | 21            |
| Weather and geography             | 5          | 7              | 4           | 5           | 3                | 5             |
| Something else                    | 9          | 9              | 9           | 10          | 7                | 6             |
| Don't know                        | 3          | 3              | 4           | 3           | 3                | 2             |

Which governing body should have primary responsibility for setting regional air quality standards? Four in 10 residents (39%) point to the state government, while others favor the federal government (19%), a regional air resources board or local government (17% each). Support for state government involvement is slightly higher now than in July 2003 and July 2005 (35% each). Today, state government is preferred over other levels of government across political, regional, racial/ethnic, and demographic groups.

**“Which level of government do you think should have the primary responsibility for setting air quality standards in your region?”**

|                              | All Adults | Party |     |     |
|------------------------------|------------|-------|-----|-----|
|                              |            | Dem   | Rep | Ind |
| State government             | 39%        | 40%   | 42% | 43% |
| Federal government           | 19         | 20    | 13  | 21  |
| Regional air resources board | 17         | 20    | 20  | 15  |
| Local government             | 17         | 14    | 20  | 16  |
| Other                        | 2          | 3     | 2   | 2   |
| Don't know                   | 6          | 3     | 3   | 3   |

**Willingness to Take Action**

Californians are concerned about air pollution in the state and in their own regions, but are they willing to take action to improve air quality? In fact, public support both for setting government standards and for purchasing vehicles that create less air pollution is strong.

Seven in 10 Californians support tougher air pollution standards on new cars, trucks, and SUVs, and 66 percent support such standards even if their next car costs more money. These numbers are nearly identical to those found in July 2003 and July 2005. Majorities of voters across political groups and regions favor tougher vehicle standards, and support for this policy action increases with education and income.

**“Would you be willing to see tougher air pollution standards on new cars, trucks, and SUVs?” (if yes: “Would this be true even if this made it more costly for you to purchase or lease your next vehicle?”)**

|   | All Adults | Party |     |     | SUV Owners |
|---|------------|-------|-----|-----|------------|
|   |            | Dem   | Rep | Ind |            |
| <b>Yes, even if more costly</b>   | 66%        | 77%   | 56% | 71% | 67%        |
| <b>Yes, but not if more costly</b>  | 7          | 7     | 7   | 6   | 8          |
| <b>Yes, but don't drive/won't purchase or lease another vehicle (volunteered)</b> | 2          | 2     | 1   | 1   | 1          |
| <b>No</b>   | 19         | 8     | 30  | 19  | 22         |
| <b>Don't know</b>   | 6          | 6     | 6   | 3   | 2          |

Support for tougher air pollution standards for commercial transportation is also high, with three in four (75%) residents in favor and 71 percent in favor even if it raises the costs for businesses. Support for this policy is high among Democrats (83%), independents (77%), and Republicans (68%). Latinos (64%) are somewhat less likely than others to support such commercial standards (71% Asians, 74% blacks, 76% whites). Support for this policy action also increases with income and education.

**“Would you be willing to see tougher air pollution standards on ships, trucks, and trains that transport freight and cargo?” (if yes: “Would this be true even if this made it more costly for these businesses to operate?”)**

|                                    | All Adults | Party |     |     | Household Income |                      |                  |
|------------------------------------|------------|-------|-----|-----|------------------|----------------------|------------------|
|                                    |            | Dem   | Rep | Ind | Under \$40,000   | \$40,000 to \$79,999 | \$80,000 or more |
| <b>Yes, even if more costly</b>    | 71%        | 83%   | 68% | 77% | 64%              | 76%                  | 80%              |
| <b>Yes, but not if more costly</b> | 4          | 3     | 5   | 3   | 5                | 3                    | 4                |
| <b>No</b>                          | 18         | 7     | 21  | 16  | 21               | 15                   | 13               |
| <b>Don't know</b>                  | 7          | 7     | 6   | 4   | 10               | 6                    | 3                |

Six in 10 adults (61%) also support tougher air pollution standards for agriculture and farm activities, and 57 percent are in favor even if it costs these businesses more to operate. Support for stricter farm and agriculture standards is lower in the Central Valley (51%) than in other regions, and is much higher among Democrats (74%) and independents (60%) than Republicans (42%).

What about personal responsibility? Seventy percent of adults say they would seriously consider purchasing or leasing a hybrid vehicle, with 57 percent saying they would even if it was more costly. Interest in such vehicles increases with education and income.



## Global Warming and Energy

### Attitudes Toward Global Warming

An increasing number of Californians believes the effects of global warming are already underway, with more than six in 10 (63%) having this perception today – a six-point increase since last July (57%). Californians are somewhat more likely than adults nationwide (58%) to believe global warming has already begun, according to a recent Gallup poll. Reflecting the partisan differences on this issue, most Democrats (74%) and independents (64%) believe that global warming has already begun, compared to fewer than half of Republicans (47%). Solid majorities across all racial/ethnic and demographic groups believe global warming is now underway, a perception that increases with education and income.

**“Which of the following statements reflects your view of when the effects of global warming will begin to happen?”**

|  | All Adults | Party |     |     |
|--|------------|-------|-----|-----|
|  |            | Dem   | Rep | Ind |
| <b>Already begun</b>   | 63%        | 74%   | 47% | 64% |
| <b>Within a few years</b>                                      | 6          | 6     | 4   | 6   |
| <b>Within your lifetime</b>                                    | 7          | 5     | 8   | 7   |
| <b>Not within lifetime, but will affect future generations</b> | 10         | 9     | 14  | 9   |
| <b>Will never happen</b>                                       | 8          | 3     | 19  | 8   |
| <b>Don't know</b>  | 6          | 3     | 8   | 6   |

Eight in 10 residents also believe global warming will be a very (49%) or somewhat serious (30%) threat to California’s future economy and quality of life. The proportion seeing this issue as a very serious threat has jumped 10 points since July 2005 (39%). Democrats (63%) are far more likely than Republicans (25%) or independents (49%) to say the threat is very serious – four in 10 Republicans call it not too (19%) or not at all serious (21%). Blacks and Latinos are more likely than whites and Asians to call global warming a very serious threat. This belief decreases with age.

**“How serious of a threat is global warming to the economy and quality of life for California's future?”**

|                           | All Adults | Race/Ethnicity |        |         |        |
|---------------------------|------------|----------------|--------|---------|--------|
|                           |            | Asians         | Blacks | Latinos | Whites |
| <b>Very serious</b>       | 49%        | 39%            | 60%    | 59%     | 44%    |
| <b>Somewhat serious</b>   | 30         | 40             | 30     | 30      | 29     |
| <b>Not too serious</b>    | 9          | 13             | 7      | 5       | 11     |
| <b>Not at all serious</b> | 8          | 4              | 1      | 2       | 12     |
| <b>Don't know</b>         | 4          | 4              | 2      | 4       | 4      |

Large majorities of Californians (79%, all adults; 75%, likely voters) also believe it is necessary to take steps right away to counter the effects of global warming; fewer held this view in July 2003 (73% all adults). Today, at least seven in 10 in all racial/ethnic and demographic groups hold this view. Most Democrats (91%), independents (80%) and Republicans (59%) say that steps should be taken right away.

## The Role of State Policymaking

Many Californians are dissatisfied with government’s response to the issue of global warming. Fewer than half say the state government is on the right track, while 33 percent say it is on the wrong track. They are more critical of the federal response to the issue (29% right track, 54% wrong track).

Fewer than half in any political or demographic group think the state government is on the right track in addressing global warming, yet residents are more likely to say right track than wrong track. Likely voters (43% right track, 35% wrong track) have a similar assessment of the state’s response. Republicans (48%) and independents (44%) are more likely than Democrats (40%) to say state government is on the right track, although fewer than half in any party hold this view. Across regions, racial/ethnic, gender, and education groups, at least four in 10, but fewer than half, say the state is on the right track.

As for the federal government, likely voters (23% right track, 62% wrong track) are even more negative than all adults. While strong majorities of Democrats (70%) and independents (64%) say the federal response to global warming is on the wrong track, Republicans are divided (37% right, 39% wrong). About half or more in all regions say the federal government is on the wrong track, with San Francisco Bay Area residents the most negative (58%). Across racial/ethnic groups, whites (62%) and blacks (60%) are mainly negative, while Latinos (42% right, 41% wrong) and Asians (34% right, 34% wrong) are divided about the federal response. The belief that the federal government is on the wrong track about the issue of global warming increases considerably with education and income.

**“Do you think the \_\_\_\_\_ is on the right track or the wrong track when it comes to addressing the issue of global warming?”**

|                                    |                    | All Adults | Party |     |     | Likely Voters |
|------------------------------------|--------------------|------------|-------|-----|-----|---------------|
|                                    |                    |            | Dem   | Rep | Ind |               |
| <b>California state government</b> | <b>Right track</b> | 43%        | 40%   | 48% | 44% | 43%           |
|                                    | <b>Wrong track</b> | 33         | 36    | 26  | 37  | 35            |
|                                    | <b>Don't know</b>  | 24         | 24    | 26  | 19  | 22            |
| <b>Federal government</b>          | <b>Right track</b> | 29         | 17    | 37  | 28  | 23            |
|                                    | <b>Wrong track</b> | 54         | 70    | 39  | 64  | 62            |
|                                    | <b>Don't know</b>  | 17         | 13    | 24  | 8   | 15            |

In the context of this more critical assessment of the federal government, 65 percent of all adults and 70 percent of likely voters favor having the state make its own policies on this issue. Support for having California act on its own has increased by 11 points since July 2005 (54% for all adults). Today, at least six in 10 in all parties and regions prefer that the state make its own policies. Support for having the state make its own policies is higher among whites (73%) and Asians (72%) than among Latinos (54%) or blacks (48%). Favor for state policy action increases sharply with education and income.

**“Do you favor or oppose the California state government making its own policies, separate from the federal government, to address the issue of global warming?”**

|                   | All Adults | Party |     |     | Likely Voters |
|-------------------|------------|-------|-----|-----|---------------|
|                   |            | Dem   | Rep | Ind |               |
| <b>Favor</b>      | 65%        | 73%   | 62% | 70% | 70%           |
| <b>Oppose</b>     | 27         | 22    | 33  | 25  | 25            |
| <b>Don't know</b> | 8          | 5     | 5   | 5   | 5             |

## California Emissions Policy

In keeping with their concerns about global warming and their calls for state government action, Californians strongly support three state policies aimed at reducing greenhouse gas (GHG) emissions.

In June 2005, Governor Schwarzenegger announced a goal of reducing GHG emissions 80 percent by 2050. A bill now in the state assembly would begin to work toward this goal by requiring a rollback of GHG emissions to 1990 levels by 2020. Two in three adults (65%), likely voters (66%), Democrats (67%), Republicans (65%), and independents (68%) favor this proposal. This level of support is similar to what the governor’s 2050 targets received in our July 2005 survey (69%). The proposal to reduce GHG emissions to 1990 levels by 2020 receives majority support from residents across all regions, racial/ethnic, and demographic groups. Favor for this proposal increases with education and income.

**“What about the proposal made by Governor Schwarzenegger and other legislators to reduce greenhouse gas emissions in the state back to 1990 levels by the year 2020?”**

|                   | All Adults | Party |     |     | Likely Voters |
|-------------------|------------|-------|-----|-----|---------------|
|                   |            | Dem   | Rep | Ind |               |
| <b>Favor</b>      | 65%        | 67%   | 65% | 68% | 66%           |
| <b>Oppose</b>     | 19         | 18    | 20  | 19  | 19            |
| <b>Don't know</b> | 16         | 15    | 15  | 13  | 15            |

To help reach 1990 levels of GHG emissions by 2020, the proposed state legislation also stipulates that mandatory emissions limits be applied to oil, electric, and natural gas facilities. This proposal receives overwhelming support across the political and demographic spectrum. About three in four adults (76%) and likely voters (77%), as well as large majorities in all parties (84% of Democrats, 78% of independents, 69% of Republicans), favor this policy action. At least seven in 10 in every demographic and racial/ethnic group are in favor; support for this proposal also increases with income and education.

Residents also expressed overwhelming favor for the state law that requires all automakers to further reduce GHG emissions from new cars in California beginning in 2009. Eight in 10 adults (78%) and likely voters (80%), and at least seven in 10 Democrats (88%), independents (79%), and Republicans (71%) favor this law. Over the past four years, support for this policy action has hovered at around 80 percent among adults each time we asked this question or a similar but not identical question (81%, June 2002; 80%, July 2003; 81%, July 2004; 77%, July 2005; 78%, today). At least seven in 10 residents in all regions and demographic groups favor this new car emissions law, and support increases with education and income. There is no difference in favor among those who own SUVs (78%) and those who do not (79%). Among those who believe the state government should make its own, separate policies to address global warming, 87 percent favor requiring automakers to reduce emissions from new cars in California beginning in 2009.

**“What about the state law that requires all automakers to further reduce the emissions of greenhouse gases from new cars in California beginning in 2009?”**

|                   | All Adults | Party |     |     | Likely Voters |
|-------------------|------------|-------|-----|-----|---------------|
|                   |            | Dem   | Rep | Ind |               |
| <b>Favor</b>      | 78%        | 88%   | 71% | 79% | 80%           |
| <b>Oppose</b>     | 16         | 9     | 24  | 16  | 16            |
| <b>Don't know</b> | 6          | 3     | 5   | 5   | 4             |

## Oil Drilling and Fuel Efficiency

Consistent with Californians' support for policies to reduce vehicle pollution, there is strong support for policies to reduce the demand for fossil fuels. Eight in 10 adults favor requiring automakers to significantly improve the fuel efficiency of cars sold in the U.S., and 74 percent agree with this action even if it increases the cost of buying a new car. Favor is high among likely voters and across political groups. The level of support for this policy today was similar in July 2003, July 2004, and July 2005.

Support for requiring greater automobile fuel efficiency even at a higher cost increases with age, education, and income. Across racial/ethnic groups, support is greater among whites (83%) and blacks (70%) than among Latinos (63%) and Asians (62%). Among SUV owners, 77 percent favor improving the fuel efficiency of cars sold in the U.S. even if it costs more to buy a new car.

**“How about requiring automakers to significantly improve the fuel efficiency of cars sold in this country?”**  
(if favor: “Would this be true even if it increased the cost of buying a new car? ”)

|                                      | All Adults | Party |     |     | Likely Voters |
|--------------------------------------|------------|-------|-----|-----|---------------|
|                                      |            | Dem   | Rep | Ind |               |
| <b>Favor, even if more costly</b>    | 74%        | 84%   | 74% | 81% | 82%           |
| <b>Favor, but not if more costly</b> | 8          | 6     | 6   | 6   | 5             |
| <b>Oppose</b>                        | 11         | 6     | 14  | 10  | 9             |
| <b>Don't know</b>                    | 7          | 4     | 6   | 3   | 4             |

A majority of residents continues to oppose allowing more drilling off the California coast, consistent with our findings since July 2003. Strong majorities of Democrats (66%) and independents (59%) today oppose allowing more oil drilling off the coast, while 65 percent of Republicans are in favor. Fifty-three percent of likely voters percent oppose more drilling. Across regions, opposition is highest in the San Francisco Bay Area (63%) and lowest in the Central Valley (41%). More men than women (47% to 38%) favor allowing more oil drilling. There are no major differences among Asians (49%), blacks (53%), Latinos (47%) and whites (53%) in opposition to more oil drilling off the California coast.

**“How about allowing more oil drilling off the California coast?”**

|                   | July 03 | July 04 | July 05 | July 06 |
|-------------------|---------|---------|---------|---------|
| <b>Favor</b>      | 39%     | 44%     | 41%     | 42%     |
| <b>Oppose</b>     | 54      | 50      | 53      | 51      |
| <b>Don't know</b> | 7       | 6       | 6       | 7       |

A majority of Californians (52%) also oppose new oil drilling in federally protected areas such as the Alaskan wilderness, compared to 44 percent of adults nationwide in a recent Pew Research Center survey. The opposition among Californians to such oil drilling proposals has been stable over the past three years (55%, July 2003; 51%, July 2004; 56%, July 2005) at a time when concerns about gasoline prices have been rising. Today, Democrats (66%) and independents (57%) oppose this proposal, while 71 percent of Republicans favor it. The proposal to expand oil drilling is opposed by 66 percent of those who disapprove of President Bush's performance on environmental issues. Among those who think the federal government is not doing enough to protect the environment, 65 percent oppose this proposal.

## Alternative Energy

In addition to strongly supporting policies to reduce the demand for fossil fuels, most Californians are also in favor of spending more government funds to develop alternative sources of energy.

More than eight in 10 adults (81%) and likely voters (86%) favor spending more government money to develop alternative energy sources for automobiles, while few in each group oppose such a program. Californians are similar to adults nationwide, according to the results of a recent Gallup poll (85% favor, 14% oppose). Over eight in ten Californians in all political groups favor additional government spending on alternative fuel development. Across regions, support is highest in the San Francisco Bay Area (86%), and is also high in the Inland Empire (82%), the Central Valley (80%), Orange/San Diego Counties (80%), and Los Angeles (78%). Across racial/ethnic groups, whites (88%) and Asians (85%) are most supportive of this energy policy proposal, while support is also high among blacks (74%) and Latinos (69%). Support for this policy increases with education and income.

**“How about spending more government money to develop alternative sources of fuel for automobiles?”**

|                   | All Adults | Party |     |     | Likely Voters |
|-------------------|------------|-------|-----|-----|---------------|
|                   |            | Dem   | Rep | Ind |               |
| <b>Favor</b>      | 81%        | 87%   | 82% | 85% | 86%           |
| <b>Oppose</b>     | 15         | 11    | 16  | 13  | 12            |
| <b>Don't know</b> | 4          | 2     | 2   | 2   | 2             |

More than eight in 10 adults (83%) and likely voters (87%) also favor spending more government money to develop renewable energy such as solar, geothermal, and wind power. According to the recent Gallup poll, Californians are more supportive of this proposal than adults nationwide (77% favor, 21% oppose). Support is high across political groups. Across the state’s regions, at least eight in ten residents support this energy policy. While whites (88%) and Asians (87%) are the most in favor of this proposal, large majorities of blacks (79%) and Latinos (73%) also support it. Support for increased government spending on renewable energy sources increases with education and income.

**“How about spending more government money to develop renewable energy such as solar, geothermal, and wind power?”**

|                   | All Adults | Party |     |     | Likely Voters |
|-------------------|------------|-------|-----|-----|---------------|
|                   |            | Dem   | Rep | Ind |               |
| <b>Favor</b>      | 83%        | 89%   | 82% | 86% | 87%           |
| <b>Oppose</b>     | 13         | 9     | 16  | 11  | 11            |
| <b>Don't know</b> | 4          | 2     | 2   | 3   | 2             |

We also asked about building more nuclear power plants, in order to reduce the U.S. dependence on fossil fuels. A majority of residents (52%) oppose building additional nuclear power plants at this time, compared to 59 percent in July 2005. Republicans (58%) favor this idea today while majorities of Democrats (61%) and independents (53%) are opposed. Likely voters are divided (46% favor, 46% oppose). Favor for more nuclear power plants increases with age, education, and income.

## Effects of Gasoline Prices

Have Californians been affected by the increase of gasoline prices at the pump? Sixty-seven percent of adults say the recent increase in gasoline prices has caused them financial hardship. Nationally, 60 percent of adults say the increase in gas prices has caused financial hardship for themselves and their household, according to a recent ABC News poll. Latinos (83%) and those with incomes under \$40,000 (80%) are more likely than others to say they are experiencing financial hardships from rising gasoline prices.

As a result of increasing gasoline prices a majority of Californians (54%) say they have cut back significantly on their driving; a year ago, 43 percent had significantly cut back on driving for this reason. Six in ten households earning less than \$80,000 say they have significantly cut back on how much they drive compared to less than half of those earning \$80,000 or more. Whites (47%) are significantly less likely to say they have cut back on their driving compared to blacks (64%), Asians (63%), and Latinos (62%). According to a recent CNN poll, Californians (54%) are slightly less likely than adults nationwide (59%) to say they have significantly cut back on how much they drive due to the increase in gas prices.

**“As a result of the recent rise in gasoline prices would you say that you have or have not cut back significantly on how much you drive?”**

|   | All Adults | Household Income |                      |                  |
|---|------------|------------------|----------------------|------------------|
|   |            | Under \$40,000   | \$40,000 to \$79,999 | \$80,000 or more |
| Yes, have cut back                                | 54%        | 62%              | 59%                  | 44%              |
| No, have not cut back                             | 38         | 28               | 36                   | 49               |
| Don't drive ( <i>volunteered</i> )                | 4          | 7                | 1                    | 1                |
| Yes, but not significantly ( <i>volunteered</i> ) | 3          | 2                | 3                    | 6                |
| Don't know  | 1          | 1                | 1                    | 0                |

What about longer-term actions to reduce gasoline use in light of the recent rise in gasoline prices? Seven in 10 residents say they are considering getting a more fuel-efficient car, and 7 percent volunteered that they own such a vehicle. Seven in 10 SUV owners say they are considering a more fuel-efficient car as their next vehicle. Younger residents are much more likely than older residents to consider buying a more fuel-efficient car. There is little difference of opinion across income groups, and large majorities across racial/ethnic groups are considering a more fuel-efficient vehicle for their next car purchase.

**“As a result of the recent rise in gasoline prices would you say that you have or have not seriously considered getting a more fuel-efficient car the next time you buy a vehicle?”**

|   | All Adults | Age   |       |     | SUV Owners |
|---|------------|-------|-------|-----|------------|
|   |            | 18-34 | 35-54 | 55+ |            |
| Yes, have considered  | 69%        | 75%   | 74%   | 54% | 71%        |
| No, have not considered                                     | 18         | 17    | 16    | 23  | 21         |
| My current vehicle is fuel-efficient ( <i>volunteered</i> ) | 7          | 5     | 8     | 10  | 6          |
| Don't drive ( <i>volunteered</i> )                          | 4          | 2     | 2     | 11  | 1          |
| Don't know  | 2          | 1     | 0     | 2   | 1          |

---

## Environment and Politics

---

### Federal and State Involvement

Six in 10 Californians think that the federal government is not doing enough to protect the environment. Democrats and independents overwhelmingly believe that the federal government is not doing enough, while a narrow majority of Republicans say that the federal government is doing more than enough or just enough to protect the environment. Two in three likely voters say that the federal government is not doing enough to protect the environment. The perception that the federal government is not doing enough is similar across age groups, increases with education and income, and is higher for whites than Latinos (65% to 52%) and in the San Francisco Bay Area than elsewhere.

Two years ago, in our July 2004 survey, a similar 56 percent said that the federal government was not doing enough and 32 percent said it was doing just enough to protect the environment.

**“Overall, do you think that the federal government is doing more than enough, just enough, or not enough to protect the environment in the United States?”**

|                  | All Adults | Party |     |     | Likely Voters |
|------------------|------------|-------|-----|-----|---------------|
|                  |            | Dem   | Rep | Ind |               |
| More than enough | 6%         | 1%    | 12% | 5%  | 7%            |
| Just enough      | 29         | 15    | 42  | 21  | 23            |
| Not enough       | 61         | 81    | 42  | 73  | 67            |
| Don't know       | 4          | 3     | 4   | 1   | 3             |

Californians hold their state government in higher regard than the federal government when it comes to environmental protection. About half of all adults (46%) and likely voters (48%) say the state government is *not* doing enough to protect the environment in California; however, about four in 10 adults and likely voters say it is doing just enough, and about one in 10 in each group believes the state government is doing more than enough to protect the environment.

The percentage saying the state government is *not* doing enough was similar four years ago in our June 2002 survey, when 51 percent held this view. At that time, 38 percent said the state was doing just enough.

Today, Democrats and independents are much more likely than Republicans to say the state government is not doing enough to protect the environment. There is little difference of opinion on this issue across age, education, and income groups or between whites and Latinos. Residents in the San Francisco Bay Area, Inland Empire, and Los Angeles are more likely than others to say the state government is not doing enough to protect the state's environment.

**“Overall, do you think that the state government is doing more than enough, just enough, or not enough to protect the environment in California?”**

|                  | All Adults | Party |     |     | Likely Voters |
|------------------|------------|-------|-----|-----|---------------|
|                  |            | Dem   | Rep | Ind |               |
| More than enough | 8%         | 3%    | 16% | 7%  | 10%           |
| Just enough      | 40         | 32    | 48  | 37  | 37            |
| Not enough       | 46         | 61    | 31  | 53  | 48            |
| Don't know       | 6          | 4     | 5   | 3   | 5             |

## President's Approval Ratings

Six in 10 California adults (59%) and likely voters (61%) say they disapprove of the way that George W. Bush is handling his job as president. The president's approval rating today among all adults (36%) is similar to his rating found in our March survey (34% approve, 62% disapprove) and in our July 2005 survey (38% approve, 57% disapprove). The president's approval rating in California today is lower than it is at the national level, as indicated in a recent Gallup Poll (40% approve, 55% disapprove).

Sharp partisan differences are evident among Californians' opinions of the president's overall job performance: Republicans (71% approve), Democrats (13% approve), independents (27% approve). Across racial/ethnic groups, majorities disapprove of President Bush's performance, with blacks (81% disapprove) more negative in their appraisal of the president than Latinos (57%), whites (58%), and Asians (58%). More than six in 10 residents in the San Francisco Bay Area (68%) and Los Angeles (62%) say they disapprove of the way the president is handling his job, compared to about half of the residents in other areas. Disapproval of the president's job performance increases with education but varies little by income, age, or gender.

Californians give the president even lower approval ratings when it comes to his handling of environmental issues; however, the level of disapproval is the same as his overall ratings because more respondents have no opinion on his environmental performance than on his overall performance. Only three in 10 adults (30%) and likely voters (28%) approve of Bush's handling of environmental issues, and his disapproval ratings are increasing (44%, June 2002; 48%, July 2003; 53%, July 2004; 54%, July 2005; 59%, today).

At this time, Bush's approval rating on energy policy is similar to his approval rating on the environment, with 29 percent of adults approving of his handling of this issue and 59 percent disapproving. Among likely voters, 27 percent approve and 65 percent disapprove of his performance in this area. The president's disapproval ratings on energy issues have also increased this year (53% in July 2005; 59% today).

When it comes to the president's overall performance on environment and energy issues, eight in 10 Democrats (82%, 82%) and seven in 10 independents (73%, 71%) disapprove of the president's actions, while a majority of Republicans (57%, 53%) approve. Majorities across racial/ethnic groups and regions disapprove of the president's performance in these two policy areas.

**"Overall, do you approve or disapprove of the way that George W. Bush is handling..."**

|   |            | All Adults | Party |     |     | Race/Ethnicity |        |         |        | Likely Voters |
|---|------------|------------|-------|-----|-----|----------------|--------|---------|--------|---------------|
|   |            |            | Dem   | Rep | Ind | Asians         | Blacks | Latinos | Whites |               |
| <i>His job as president of the United States?</i> | Approve    | 36%        | 13%   | 71% | 27% | 34%            | 15%    | 37%     | 38%    | 36%           |
|   | Disapprove | 59         | 84    | 24  | 72  | 58             | 81     | 57      | 58     | 61            |
|   | Don't know | 5          | 3     | 5   | 1   | 8              | 4      | 6       | 4      | 3             |
| <i>Environmental issues in the United States?</i> | Approve    | 30         | 10    | 57  | 21  | 28             | 15     | 34      | 30     | 28            |
|   | Disapprove | 59         | 82    | 30  | 73  | 54             | 76     | 55      | 60     | 63            |
|   | Don't know | 11         | 8     | 13  | 6   | 18             | 9      | 11      | 10     | 9             |
| <i>Energy policy in the United States?</i>        | Approve    | 29         | 10    | 53  | 21  | 22             | 17     | 33      | 30     | 27            |
|   | Disapprove | 59         | 82    | 33  | 71  | 59             | 75     | 55      | 60     | 65            |
|   | Don't know | 12         | 8     | 14  | 8   | 19             | 8      | 12      | 10     | 8             |



## Governor's Approval Ratings

Governor Schwarzenegger's overall approval rating is mixed among all adults (42% approve, 44% disapprove) and is slightly higher among likely voters (49% approve, 43% disapprove). The governor's current approval ratings are higher than those in our May survey (36% all adults, 42% likely voters) and a year ago in our July 2005 survey (34% all adults, 41% likely voters).

Today, Republicans (76%) express a high level of approval for the GOP governor, Democrats (62%) are mostly disapproving of his performance, and independents are divided (42% approve, 44% disapprove). The majority of whites (53%) approve of the way the governor is handling his job, while majorities of blacks (70%) and Latinos (61%) disapprove and Asians are more divided (41% approve, 29% disapprove). As for differences across the five major regions of the state, the governor's highest approval ratings are in Orange/San Diego Counties and the Central Valley (49% each), and his highest disapproval ratings are in Los Angeles (49%).

Californians are also closely divided when it comes to the governor's handling of environmental issues, with 39 percent of adults saying they approve of his performance and 38 percent saying they disapprove. Likely voters offer a more positive assessment on the governor's handling of environmental issues (44% approve, 36% disapprove). About one in five adults and likely voters have no opinion on the governor's environmental record. Following the trend in his overall approval ratings, Schwarzenegger's ratings on environmental issues have improved since his July 2005 ratings among all adults (32% approve, 35% disapprove) and among likely voters (35% approve, 33% disapprove).

As for the governor's ratings on energy policy, state residents are once again divided—all adults (35% approve, 40% disapprove), likely voters (40% approve, 38% disapprove)—with about one in four in each of these groups having no opinion. In terms of the overall ratings of the governor's handling of energy and environmental policy, over six in 10 Republicans approve of his performance, majorities of Democrats disapprove, and independents are more divided. Whites and Asians offer more positive assessments than Latinos and blacks on both issues.

**"Overall, do you approve or disapprove of the way that Arnold Schwarzenegger is handling..."**

|  |            | All Adults | Party |     |     | Race/Ethnicity |        |         |        | Likely Voters |
|--|------------|------------|-------|-----|-----|----------------|--------|---------|--------|---------------|
|  |            |            | Dem   | Rep | Ind | Asians         | Blacks | Latinos | Whites |               |
| <i>His job as governor of California?</i>  | Approve    | 42%        | 25%   | 76% | 42% | 41%            | 22%    | 27%     | 53%    | 49%           |
|  | Disapprove | 44         | 62    | 16  | 44  | 29             | 70     | 61      | 34     | 43            |
|  | Don't know | 14         | 13    | 8   | 14  | 30             | 8      | 12      | 13     | 8             |
| <i>Environmental issues in California?</i> | Approve    | 39         | 25    | 66  | 39  | 41             | 27     | 29      | 46     | 44            |
|  | Disapprove | 38         | 54    | 14  | 39  | 24             | 58     | 51      | 31     | 36            |
|  | Don't know | 23         | 21    | 20  | 22  | 35             | 15     | 20      | 23     | 20            |
| <i>Energy policy in California?</i>        | Approve    | 35         | 20    | 61  | 37  | 33             | 18     | 27      | 42     | 40            |
|  | Disapprove | 40         | 55    | 16  | 43  | 35             | 60     | 51      | 32     | 38            |
|  | Don't know | 25         | 25    | 23  | 20  | 32             | 22     | 22      | 26     | 22            |

The public also gives mixed evaluations of the state of the state, with 42 percent of adults saying the state is headed in the right direction and 47 percent saying it is headed in the wrong direction. Perceptions today are an improvement from our May survey, when 35 percent said the state was headed in the right direction and 57 percent said it was headed in the wrong direction. There is also more optimism today than one year ago in our July 2005 survey (38% right direction, 51% wrong direction).

### California Governor’s Election

Eighty-five percent of the voters most likely to vote say that the candidates’ positions on the environment will be at least somewhat important in determining their vote for governor, and 44 percent rate environmental positions as very important. In June 2002, a similar 88 percent of voters said that environmental positions were at least somewhat important, and 39 percent said they were very important.

How does this compare with the importance placed on public schools, which is a top issue among voters? In April, a similar nine in 10 likely voters said the candidates’ positions on public schools are at least somewhat important; however, six in 10 said this was very important to them.

Majorities in all political groups today say the gubernatorial candidates’ positions on the environment are at least somewhat important to them. Democrats are more likely than independents and especially Republicans to say this issue is very important in determining their vote for governor. Latinos (54%) are much more likely than whites (42%) to say that environmental positions are very important.

Currently, GOP Governor Schwarzenegger has a double-digit lead over Democratic challenger Phil Angelides, with about one in four likely voters choosing to vote for others or undecided. Schwarzenegger has the support of eight in 10 Republicans, and independents favor him by an 18-point margin. A majority of Democrats support Angelides. While Angelides is the favorite among those who rank the environment as very important, Schwarzenegger leads among those who say it is somewhat important.

**“In thinking about the California governor’s election in November, how important to you are the candidates’ positions on the environment—such as air pollution, global warming, and energy—in determining your vote?”**

| <i>Likely Voters Only</i> | All Likely Voters | Party |     |     | Latino |
|---------------------------|-------------------|-------|-----|-----|--------|
|                           |                   | Dem   | Rep | Ind |        |
| <b>Very important</b>     | 44%               | 63%   | 24% | 41% | 54%    |
| <b>Somewhat important</b> | 41                | 32    | 52  | 42  | 42     |
| <b>Not too important</b>  | 14                | 5     | 24  | 16  | 4      |
| <b>Don’t know</b>         | 1                 | 0     | 0   | 1   | 0      |

**“If the November 7<sup>th</sup> election for governor were being held today, would you vote for...?”**

| <i>Likely Voters Only</i>                         | All Likely Voters | Party |     |     | Candidate Positions on the Environment are... |                    |
|---|-------------------|-------|-----|-----|---|--------------------|
|   |                   | Dem   | Rep | Ind | Very Important                                | Somewhat Important |
| <b>Arnold Schwarzenegger, the Republican</b>      | 43%               | 16%   | 79% | 43% | 23%   | 55%                |
| <b>Phil Angelides, the Democrat</b>               | 30                | 54    | 3   | 25  | 44  | 23                 |
| <b>Peter Camejo, the Green</b>                    | 4                 | 4     | 1   | 3   | 6   | 2                  |
| <b>Edward C. Noonan, the American Independent</b> | 1                 | 1     | 0   | 2   | 1   | 1                  |
| <b>Art Olivier, the Libertarian</b>               | 1                 | 1     | 0   | 2   | 1   | 1                  |
| <b>Someone else</b>                               | 2                 | 3     | 2   | 3   | 3   | 2                  |
| <b>Don’t know</b>                                 | 19                | 21    | 15  | 22  | 22  | 16                 |

## California U.S. Senate Election

With high levels of disapproval of the federal government on environmental issues, 85 percent of likely voters say the U.S. Senate candidates' positions on the environment are important, and 44 percent say they are very important, in deciding how to vote in the November election. In our July 2004 survey, an equal proportion of likely voters said the Senate candidates' positions on environment were at least somewhat important, while 39 percent said they were very important. This year, voters rank the candidates' positions on the environment equally important in the senate race and governor's race.

As with the governor's race, Democrats are more likely than independents and Republicans to say the U.S. Senate candidates' environmental positions are very important to them. Still, overwhelming majorities of likely voters across all party lines say the Senate candidates' positions will be at least somewhat important in deciding how they vote. Latinos more often than whites (54% to 42%), women more than men (50% to 38%), and San Francisco Bay Area and Los Angeles voters more than others say this issue is very important.

Democratic incumbent U.S. Senator Dianne Feinstein currently leads Republican challenger Richard Mountjoy by a 21-point margin, with nearly four in ten voters undecided or opting for other candidates. Feinstein has the support of two in three Democrats, and independents lean toward her, while Mountjoy is favored by about half of Republicans. Feinstein is the choice among those who say the candidates' positions on the environment are either very or somewhat important in how they vote.

**“In thinking about the California U.S. Senate election in November, how important to you are the candidates' positions on the environment—such as air pollution, global warming, and energy policy—in determining your vote?”**

| <i>Likely Voters Only</i> | All Likely Voters | Party |     |     | Latino |
|---------------------------|-------------------|-------|-----|-----|--------|
|                           |                   | Dem   | Rep | Ind |        |
| <b>Very important</b>     | 44%               | 60%   | 25% | 44% | 54%    |
| <b>Somewhat important</b> | 41                | 35    | 48  | 40  | 40     |
| <b>Not too important</b>  | 14                | 4     | 26  | 15  | 6      |
| <b>Don't know</b>         | 1                 | 1     | 1   | 1   | 0      |

**“If the November 7<sup>th</sup> U.S. Senate election were being held today, would you vote for...?”**

| <i>Likely Voters Only</i>                      | All Likely Voters | Party |     |     | Candidate Positions on the Environment are... |                    |
|--|-------------------|-------|-----|-----|---|--------------------|
|  |                   | Dem   | Rep | Ind | Very Important                                | Somewhat Important |
| <b>Dianne Feinstein, the Democrat</b>          | 42%               | 67%   | 15% | 39% | 56%   | 39%                |
| <b>Richard 'Dick' Mountjoy, the Republican</b> | 21                | 5     | 47  | 13  | 10  | 24                 |
| <b>Todd Chretien, the Green</b>                | 5                 | 5     | 3   | 5   | 7   | 4                  |
| <b>Michael S. Metti, the Libertarian</b>       | 5                 | 3     | 4   | 4   | 3   | 5                  |
| <b>Don Grundmann, the American Independent</b> | 4                 | 3     | 3   | 9   | 4   | 3                  |
| <b>Someone else</b>                            | 2                 | 2     | 2   | 2   | 2   | 2                  |
| <b>Don't know</b>                              | 21                | 15    | 26  | 28  | 18  | 23                 |

### Alternative Energy Initiative

Proposition 87 is a citizens’ initiative on the November ballot that would establish a \$4 billion program to reduce oil and gasoline usage by 25 percent, with research and production incentives for alternative energy, funded by a tax of 1.5 to 6 percent on the price per barrel of oil extracted from California.

When read the ballot title and a partial summary, 61 percent of likely voters say they would vote yes on Proposition 87, 23 percent would vote no, and 16 percent are undecided. More than six in 10 Democrats (67%) and independents (63%) and a bare majority of Republicans (51%) favor this initiative.

Majorities of likely voters support this measure across the state’s major regions (San Francisco Bay Area, 66%; Inland Empire, 64%; Los Angeles, 61%; Orange/San Diego, 59%; Central Valley, 55%). Latinos (66%) are more likely than whites (60%) to say they would vote yes on Proposition 87. There are few differences across education, gender, or income groups, however, support for Proposition 87 declines with age (ages 18 to 34, 71%; 35 to 54, 62%; 55 and older, 57%).

**“Proposition 87 is called ‘Alternative Energy: Research, Production, Incentives, Tax on California Oil, Initiative Constitutional Amendment and Statute...’  
If the election were held today, would you vote yes or no on Proposition 87?”\***

| <i>Likely Voters Only</i> | <b>All Likely Voters</b> | <u>Party</u> |            |            | <b>Latino</b> |
|---------------------------|--------------------------|--------------|------------|------------|---------------|
|                           |                          | <b>Dem</b>   | <b>Rep</b> | <b>Ind</b> |               |
| <b>Yes</b>                | 61%                      | 67%          | 51%        | 63%        | 66%           |
| <b>No</b>                 | 23                       | 14           | 35         | 21         | 21            |
| <b>Don't know</b>         | 16                       | 19           | 14         | 16         | 13            |

Regardless of their position on Proposition 87, more than nine in 10 likely voters say that alternative energy development is at least somewhat important, and 65 percent say that this is a very important issue for them. Democrats and independents are much more likely than Republicans to hold this view. The belief that alternative energy development is very important increases with education and receives more support in the San Francisco Bay Area than elsewhere in the state. Support is somewhat similar among age and income groups, men and women, and whites and Latinos. Among the likely voters who support Proposition 87, about three in four (74%) believe that alternative energy development is very important. Among those opposed to Proposition 87, fewer than half (44%) consider this issue very important.

**“How important to you is the issue of alternative energy development?”**

| <i>Likely Voters Only</i>   | <b>All Likely Voters</b> | <u>Party</u> |            |            | <u>Proposition 87</u> |           |
|-----------------------------|--------------------------|--------------|------------|------------|-----------------------|-----------|
|                             |                          | <b>Dem</b>   | <b>Rep</b> | <b>Ind</b> | <b>Yes</b>            | <b>No</b> |
| <b>Very important</b>       | 65%                      | 74%          | 50%        | 65%        | 74%                   | 44%       |
| <b>Somewhat important</b>   | 30                       | 23           | 41         | 29         | 24                    | 41        |
| <b>Not too important</b>    | 3                        | 2            | 6          | 3          | 1                     | 9         |
| <b>Not at all important</b> | 1                        | 0            | 2          | 2          | 0                     | 5         |
| <b>Don't know</b>           | 1                        | 1            | 1          | 1          | 1                     | 1         |

\* For complete question wording, see question 52 in the survey questionnaire, page 26.

---

## Survey Methodology

---

The PPIC Statewide Survey is directed by Mark Baldassare, research director at the Public Policy Institute of California, with assistance in research and writing from Sonja Petek, project manager for this survey, Dean Bonner and Jennifer Paluch, survey research associates, and Randy Uang, survey intern. The survey was conducted with funding from the William and Flora Hewlett Foundation as part of a three-year grant on environment, education, and population issues. We benefited from discussions with Hewlett staff, their grantees, and colleagues at other institutions; however, the survey methods, questions, and content of the report were solely determined by Mark Baldassare.

The findings of this survey are based on a telephone survey of 2,501 California adult residents interviewed between July 5 and July 18, 2006. Interviewing took place mostly on weekday and weekend evenings, using a computer-generated random sample of telephone numbers that ensured that both listed and unlisted numbers were called. All telephone exchanges in California were eligible for calling. Telephone numbers in the survey sample were called up to six times to increase the likelihood of reaching eligible households. Once a household was reached, an adult respondent (age 18 or older) was randomly chosen for interviewing by using the “last birthday method” to avoid biases in age and gender. Interviews took an average of 18 minutes to complete. Interviewing was conducted in English, Spanish, Korean, Vietnamese, or Chinese (Mandarin or Cantonese). We chose these languages because Spanish is the dominant language among non-English speaking adults in California, followed in prevalence by the three Asian languages noted above. *Accent on Languages* translated the survey into Spanish, with assistance from Renatta DeFever. *Schulman, Ronca & Bucuvalas, Inc.* translated the survey into Chinese, Korean, and Vietnamese and conducted the telephone interviewing. We used recent U.S. Census and state figures to compare the demographic characteristics of the survey sample with characteristics of California’s adult population. The survey sample was closely comparable to the census and state figures. The survey data in this report were statistically weighted to account for any demographic differences.

The sampling error for the total sample of 2,501 adults is +/- 2 percent at the 95 percent confidence level. This means that 95 times out of 100, the results will be within 2 percentage points of what they would be if all adults in California were interviewed. The sampling error for subgroups is larger. The sampling error for the 1,835 registered voters is +/- 2.5 percent. The sampling error for the 1,225 likely voters is +/- 3.0 percent. Sampling error is only one type of error to which surveys are subject. Results may also be affected by factors such as question wording, question order, and survey timing.

Throughout the report, we refer to five geographic regions that account for approximately 90 percent of the state population. “Central Valley” includes Butte, Colusa, El Dorado, Fresno, Glenn, Kern, Kings, Madera, Merced, Placer, Sacramento, San Joaquin, Shasta, Stanislaus, Sutter, Tehama, Tulare, Yolo, and Yuba Counties. “SF Bay Area” includes Alameda, Contra Costa, Marin, Napa, San Francisco, San Mateo, Santa Clara, Solano, and Sonoma Counties. “Los Angeles” refers to Los Angeles County, “Inland Empire” includes Riverside and San Bernardino Counties, and “Orange/San Diego” refers to Orange and San Diego Counties. Residents from all other areas (e.g., north coast, mountains) are included in the total sample; however, sample sizes for these less populated areas of California are not large enough to report separately.

We present specific results for respondents in the four self-identified racial/ethnic groups of Asian, black, Latino, and non-Hispanic white. We also compare the opinions of registered Democrats, Republicans, and independents. The “independents” category includes those who are registered to vote as “decline to state.” We also analyze the responses of “likely” voters—those who are the most likely to participate in the state’s elections. We use earlier PPIC Statewide Surveys to analyze trends over time in California. We also compare PPIC Statewide Survey responses to responses in national surveys by ABC News, CNN, the Gallup Poll, and the Pew Research Center.



**PPIC STATEWIDE SURVEY: SPECIAL SURVEY ON THE ENVIRONMENT**  
**JULY 5-18, 2006**  
**2,501 CALIFORNIA ADULT RESIDENTS:**  
**ENGLISH, SPANISH, CHINESE, KOREAN, AND VIETNAMESE**  
**MARGIN OF ERROR +/-2% AT 95% CONFIDENCE LEVEL FOR TOTAL SAMPLE**

---

1. First, overall, do you approve or disapprove of the way that Arnold Schwarzenegger is handling his job as governor of California?

42% approve  
44 disapprove  
14 don't know

*[rotate questions 2 and 3]*

2. Do you approve or disapprove of the way that Governor Schwarzenegger is handling environmental issues in California?

39% approve  
38 disapprove  
23 don't know

3. Do you approve or disapprove of the way that Governor Schwarzenegger is handling energy policy in California?

35% approve  
40 disapprove  
25 don't know

4. Do you think things in California are generally going in the right direction or the wrong direction?

42% right direction  
47 wrong direction  
11 don't know

5. Turning to economic conditions in California, do you think that during the next 12 months we will have good times financially or bad times?

39% good times  
46 bad times  
15 don't know

6. On another topic, what do you think is the most important environmental issue facing California today?

*[code, don't read]*

24% air pollution, vehicle emissions  
12 energy  
8 global warming, global climate change, greenhouse gases  
5 pollution in general  
4 water pollution of oceans, rivers, lakes, streams  
4 water supply, reservoirs  
3 immigration, immigrants  
3 population growth, overpopulation  
2 loss of forests, forest fires  
2 traffic congestion  
15 other  
18 don't know

Next, we are interested in the region of California that you live in. I am going to read you a list of problems other people have told us about. For each one, please tell me if it is a big problem, somewhat of a problem, or not a problem in your region.

*[rotate questions 7 to 10]*

7. How about traffic congestion on freeways and major roads?

64% big problem  
23 somewhat of a problem  
12 not a problem  
1 don't know

8. How about population growth and development?

42% big problem  
31 somewhat of a problem  
25 not a problem  
2 don't know

9. How about air pollution?

- 41% big problem
- 34 somewhat of a problem
- 24 not a problem
- 1 don't know

10. How about pollution of drinking water?

- 22% big problem
- 32 somewhat of a problem
- 42 not a problem
- 4 don't know

11. How satisfied are you with the air quality in your region today?

- 18% very satisfied
- 44 somewhat satisfied
- 24 somewhat dissatisfied
- 13 very dissatisfied
- 1 don't know

12. Is the air quality in your region better or worse than it was 10 years ago?

- 21% better
- 50 worse
- 13 same (*volunteered*)
- 16 don't know

13. How serious of a health threat is air pollution in your region to you and your immediate family—do you think that it is a very serious, somewhat serious, or not too serious of a health threat?

- 23% very serious
- 37 somewhat serious
- 36 not too serious
- 3 not at all serious (*volunteered*)
- 1 don't know

14. Do you think that air pollution is a more serious health threat in lower-income areas than other areas in your region?

- 47% yes
- 45 no
- 8 don't know

15. Do you or does anyone in your immediate family suffer from asthma or other respiratory problems? (*if yes: Would that be you or someone in your family?*)

- 10% yes, respondent
- 24 yes, someone in immediate family
- 7 yes, both
- 59 no

We are interested in knowing what people are willing to do in order to reduce air pollution in their region.

*[rotate questions 16 and 17]*

16. Would you be willing to see tougher air pollution standards on new cars, trucks, and SUVs (sport-utility vehicles)? (*if yes: Would this be true even if this made it more costly for you to purchase or lease your next vehicle?*)

- 66% yes, even if more costly
- 7 yes, but not if more costly
- 2 yes, but don't drive/won't purchase or lease another vehicle (*volunteered*)
- 19 no
- 6 don't know

17. Would you seriously consider purchasing or leasing a vehicle powered by a hybrid gas and electric engine? (*if yes: Would this be true even if this made it more costly for you to purchase or lease your next vehicle?*)

- 57% yes, even if more costly
- 13 yes, but not if more costly
- 18 no
- 2 already have a hybrid (*volunteered*)
- 2 don't drive/won't purchase or lease another vehicle (*volunteered*)
- 8 don't know

*[rotate questions 18 and 19]*

18. Would you be willing to see tougher air pollution standards on agriculture and farm activities? (*if yes: Would this be true even if this made it more costly for these businesses to operate?*)

- 57% yes, even if more costly
- 4 yes, but not if more costly
- 29 no
- 10 don't know



19. Would you be willing to see tougher air pollution standards on ships, trucks, and trains that transport freight and cargo? (if yes: Would this be true even if this made it more costly for these businesses to operate?)

- 71% yes, even if more costly
- 4 yes, but not if more costly
- 18 no
- 7 don't know

20. Which of the following do you think contributes the most to air pollution in your region?

*[read rotated list, then ask "or something else"]*

- 26% personal vehicle emissions
- 18 commercial vehicle emissions
- 16 population growth and development
- 12 industry and agriculture
- 11 pollution from outside the area
- 5 weather and geography
- 6 all of the above (volunteered)
- 3 something else (specify)
- 3 don't know

21. More generally, which level of government do you think should have the primary responsibility for setting air quality standards in your region?

*[read list, rotate order top to bottom]*

- 19% the federal government
- 39 the state government
- 17 a regional air resources board
- 17 the local government
- 2 other (specify)
- 6 don't know

22. On another topic, which of the following statements reflects your view of when the effects of global warming will begin to happen: *[rotate order]* (1) they have already begun to happen; (2) they will start happening within a few years; (3) they will start happening within your lifetime; (4) they will not happen within your lifetime, but they will affect future generations; *[or]* (5) they will never happen?

- 63% already begun
- 6 within a few years
- 7 within your lifetime
- 10 not within lifetime, but will affect future generations
- 8 will never happen
- 6 don't know

23. Do you think it is necessary to take steps to counter the effects of global warming right away, or isn't it necessary to take steps yet?

- 79% right away
- 15 not necessary yet
- 2 neither, never necessary (volunteered)
- 4 don't know

24. How serious of a threat is global warming to the economy and quality of life for California's future?

- 49% very serious
- 30 somewhat serious
- 9 not too serious
- 8 not at all serious
- 4 don't know

State policies could be used to address the effects of global warming in California. Please tell me whether you favor or oppose the following proposals.

*[rotate questions 25 to 27, keeping q25/q26 as a block]*

25. What about the proposal made by Governor Schwarzenegger and other legislators to reduce greenhouse gas emissions in the state back to 1990 levels by the year 2020?

- 65% favor
- 19 oppose
- 16 don't know

26. What about establishing mandatory emissions limits for oil, electric, and natural gas facilities in order to reduce greenhouse gas emissions 25 percent by the year 2020?

- 76% favor
- 16 oppose
- 8 don't know

27. What about the state law that requires all automakers to further reduce the emissions of greenhouse gases from new cars in California beginning in 2009?

- 78% favor
- 16 oppose
- 6 don't know

*[rotate questions 28 and 29]*

28. Do you think the California state government is on the right track or the wrong track when it comes to addressing the issue of global warming?

- 43% right track
- 33 wrong track
- 24 don't know

29. Do you think the federal government is on the right track or the wrong track when it comes to addressing the issue of global warming?

29% right track  
54 wrong track  
17 don't know

30. Do you favor or oppose the California state government making its own policies, separate from the federal government, to address the issue of global warming?

65% favor  
27 oppose  
8 don't know

31. Changing topics, overall, do you approve or disapprove of the way that George W. Bush is handling his job as president of the United States?

36% approve  
59 disapprove  
5 don't know

*[rotate questions 32 and 33]*

32. Do you approve or disapprove of the way that President Bush is handling environmental issues in the United States?

30% approve  
59 disapprove  
11 don't know

33. Do you approve or disapprove of the way that President Bush is handling energy policy in the United States?

29% approve  
59 disapprove  
12 don't know

*[rotate questions 34 and 35]*

34. Overall, do you think that the federal government is doing more than enough, just enough, or not enough to protect the environment in the United States?

6% more than enough  
29 just enough  
61 not enough  
4 don't know

35. Overall, do you think that the state government is doing more than enough, just enough, or not enough to protect the environment in California?

8% more than enough  
40 just enough  
46 not enough  
6 don't know

Thinking about the country as a whole, to address the country's energy needs and reduce dependence on foreign oil sources, do you favor or oppose the following proposals?

*[rotate questions 36 to 38]*

36. How about requiring automakers to significantly improve the fuel efficiency of cars sold in this country? (if favor: Would this be true even if it increased the cost of buying a new car?)

74% favor, even if more costly  
8 favor, but not if more costly  
11 oppose  
7 don't know

37. How about allowing more oil drilling off the California coast?

42% favor  
51 oppose  
7 don't know

38. How about allowing new oil drilling in federally-protected areas such as the Alaskan wilderness?

42% favor  
52 oppose  
6 don't know

*[rotate questions 39 to 41]*

39. How about spending more government money to develop alternative sources of fuel for automobiles?

81% favor  
15 oppose  
4 don't know

40. How about spending more government money to develop renewable energy such as solar, geothermal, and wind power?

83% favor  
13 oppose  
4 don't know

41. How about building more nuclear power plants at this time?

39% favor  
52 oppose  
9 don't know

42. Next, have recent price increases in gasoline caused any financial hardship for you or your household?

67% yes, caused hardship  
32 no, have not caused hardship  
1 don't know

43. As a result of the recent rise in gasoline prices would you say that you have or have not cut back significantly on how much you drive?

- 54% yes, have cut back
- 38 no, have not cut back
- 4 don't drive/don't have a car (*volunteered*)
- 3 yes, have cut back, but not significantly (*volunteered*)
- 1 don't know

44. As a result of the recent rise in gasoline prices would you say that you have or have not seriously considered getting a more fuel-efficient car the next time you buy a vehicle?

- 69% yes, have considered
- 18 no, have not considered
- 7 my current vehicle is fuel-efficient (*volunteered*)
- 4 don't drive/won't buy another vehicle (*volunteered*)
- 2 don't know

45. On another topic, some people are registered to vote and others are not. Are you absolutely certain that you are registered to vote?

- 73% yes [*ask q45a*]
- 27 no [*skip to q54*]

45a. Are you registered as a Democrat, a Republican, another party, or as an independent?

- 42% Democrat [*skip to q47*]
- 33 Republican [*skip to q47*]
- 20 independent [*ask q46*]
- 5 another party [*skip to q47*]

46. Do you think of yourself as closer to the Republican Party or Democratic Party?

- 22% Republican Party
- 45 Democratic Party
- 28 neither (*volunteered*)
- 5 don't know

*[Responses recorded for questions 47 to 53 are from likely voters only.]*

47. If the November 7th election for governor were being held today, would you vote for...?

*[rotate names, then ask "or someone else"]*

- 43% Arnold Schwarzenegger, the Republican
- 30 Phil Angelides, the Democrat
- 4 Peter Camejo, the Green
- 1 Art Olivier, the Libertarian
- 1 Edward C. Noonan, the American Independent
- 2 someone else (*specify*)
- 19 don't know

48. How closely are you following news about candidates for the 2006 governor's election?

- 19% very closely
- 49 fairly closely
- 24 not too closely
- 7 not at all closely
- 1 don't know

49. In thinking about the California governor's election in November, how important to you are the candidates' positions on the environment—such as air pollution, global warming, and energy policy—in determining your vote?

- 44% very important
- 41 somewhat important
- 14 not too important
- 1 don't know

50. If the November 7th U.S. Senate election were being held today, would you vote for...?

*[rotate names, then ask "or someone else"]*

- 42% Dianne Feinstein, the Democrat
- 21 Richard "Dick" Mountjoy, the Republican
- 5 Todd Chretien, the Green
- 5 Michael S. Metti, the Libertarian
- 4 Don Grundmann, the American Independent
- 2 someone else (*specify*)
- 21 don't know

51. In thinking about the California U.S. Senate election in November, how important to you are the candidates' positions on the environment—such as air pollution, global warming, and energy policy—in determining your vote?

- 44% very important
- 41 somewhat important
- 14 not too important
- 1 don't know

52. Proposition 87 is called “Alternative Energy: Research, Production, Incentives, Tax on California Oil, Initiative Constitutional Amendment and Statute.” It establishes a \$4 billion program to reduce oil and gasoline usage by 25 percent, with research and production incentives for alternative energy, alternative energy vehicles, energy efficient technologies, and for education and training. It is funded by a tax of 1.5% to 6%, depending on oil price per barrel, on producers of oil extracted in California. It prohibits producers from passing the tax on to consumers. If the election were held today, would you vote yes or no on Proposition 87?

- 61% yes
- 23 no
- 16 don't know

53. How important to you is the issue of alternative energy development?

- 65% very important
- 30 somewhat important
- 3 not too important
- 1 not at all important
- 1 don't know

54. Would you consider yourself to be politically:

*[read list, rotate order top to bottom]*

- 9% very liberal
- 20 somewhat liberal
- 32 middle-of-the-road
- 26 somewhat conservative
- 10 very conservative
- 3 don't know

55. Generally speaking, how much interest would you say you have in politics?

- 23% great deal
- 42 fair amount
- 28 only a little
- 7 none

*[D1-D5: demographic questions]*

D6. How do you usually commute to work?

- 70% drive alone
- 14 carpool
- 6 take public bus or transit
- 2 walk
- 2 bicycle
- 4 work at home (*volunteered*)
- 2 other (*specify*)

D7. Do you personally own or lease an SUV (sport-utility vehicle)?

- 23% yes
- 77 no

D7a. Do you personally own or lease a hybrid vehicle?

- 4% yes
- 96 no

*[D8-D14: demographic questions]*

## PPIC STATEWIDE SURVEY

### Advisory Committee

**Angela Blackwell**

Founder and Chief Executive Officer  
PolicyLink

**Paul Brest**

President  
The William and Flora Hewlett Foundation

**Mollyann Brodie**

Vice President  
Kaiser Family Foundation

**Bruce E. Cain**

Director  
Institute of Governmental Studies  
University of California, Berkeley

**James E. Canales**

President  
The James Irvine Foundation

**Matthew K. Fong**

President  
Strategic Advisory Group

**William Hauck**

President  
California Business Roundtable

**Dennis A. Hunt**

Vice President  
Communications and Public Affairs  
The California Endowment

**Sherry Bebitch Jeffe**

Senior Scholar  
School of Policy, Planning, and Development  
University of Southern California

**Carol S. Larson**

President and Chief Executive Officer  
The David and Lucile Packard Foundation

**Monica Lozano**

Publisher and Chief Executive Officer  
*La Opinión*

**Donna Lucas**

CEO  
Lucas Public Affairs

**Dan Rosenheim**

News Director  
KPIX-TV

**Carol Stogsdill**

President  
Stogsdill Consulting

**Cathy Taylor**

Vice President and  
Editorial Commentary Director  
*Orange County Register*

**Raymond L. Watson**

Vice Chairman of the Board Emeritus  
The Irvine Company

**Carol Whiteside**

President  
Great Valley Center

*The PPIC Statewide Survey Advisory Committee is a diverse group of experts who provide advice on survey issues. However, survey methods, questions, content, and timing are determined solely by PPIC.*



# PUBLIC POLICY INSTITUTE OF CALIFORNIA

## Board of Directors

**Thomas C. Sutton, *Chair***

Chairman and Chief Executive Officer  
Pacific Life Insurance Company

**Linda Griego**

President and Chief Executive Officer  
Griego Enterprises, Inc.

**Edward K. Hamilton**

Chairman  
Hamilton, Rabinovitz & Alschuler, Inc.

**Gary K. Hart**

Founder  
Institute for Education Reform  
California State University, Sacramento

**Walter B. Hewlett**

Director  
Center for Computer Assisted Research  
in the Humanities

**David W. Lyon**

President and Chief Executive Officer  
Public Policy Institute of California

**Cheryl White Mason**

Vice-President Litigation  
Legal Department  
Hospital Corporation of America

**Ki Suh Park**

Design and Managing Partner  
Gruen Associates

**Constance L. Rice**

Co-Director  
The Advancement Project

**Raymond L. Watson**

Vice Chairman of the Board Emeritus  
The Irvine Company

**Carol Whiteside**

President  
Great Valley Center

## Advisory Council

**Stuart A. Gabriel**

Director and Lusk Chair  
Lusk Center for Real Estate  
University of Southern California

**Clifford W. Graves**

**Elizabeth G. Hill**

Legislative Analyst  
State of California

**Hilary W. Hoynes**

Associate Professor  
Department of Economics  
University of California, Davis

**Andrés E. Jiménez**

Director  
California Policy Research Center  
University of California  
Office of the President

**Norman R. King**

Director, University Transportation Center  
California State University, San Bernardino

**Dean Misczynski**

Director  
California Research Bureau

**Rudolf Nothenberg**

Chief Administrative Officer (Retired)  
City and County of San Francisco

**Manuel Pastor**

Professor, Latin American & Latino Studies  
University of California, Santa Cruz

**Peter Schrag**

Contributing Editor  
*The Sacramento Bee*

**James P. Smith**

Senior Economist  
RAND Corporation

**PUBLIC POLICY INSTITUTE OF CALIFORNIA**

500 Washington Street, Suite 800 • San Francisco, California 94111

Phone: (415) 291-4400 • Fax: (415) 291-4401

[www.ppic.org](http://www.ppic.org) • [info@ppic.org](mailto:info@ppic.org)